

EROSION AND SEDIMENT CONTROL NOTES

GENERAL INSTRUCTIONS

E1: THIS PLAN IS TO BE READ IN CONJUNCTION WITH THE ENGINEERING PLANS, AND ANY OTHER PLANS OR WRITTEN INSTRUCTIONS THAT MAY BE ISSUED AND RELATING TO DEVELOPMENT AT THE SUBJECT SITE.

E2. THE SITE SUPERINTENDENT WILL ENSURE THAT ALL SOIL AND WATER MANAGEMENT WORKS ARE LOCATED AS INSTRUCTED IN THIS

c3. ALL BIDDERS AND SUB-CONTRACTORS WILL BE INFORMED OF THEIR RESPONSIBILITIES IN MINIMISING THE POTENTIAL FOR SOIL EROSION AND POLLUTION TO DOWNSLOPE LANDS AND WATERWAYS.

CONSTRUCTION SEQUENCE

E4. THE SOIL EROSION POTENTIAL ON THIS SITE SHALL BE MINIMISED. HENCE, WORKS SHALL BE UNDERTAKEN IN THE FOLLOWING SEQUENCE :

- (b) UNDERTAKE SITE DEVELOPMENT WORKS IN ACCORDANCE WITH THE ENGINEERING PLANS. PHASE DEVELOPMENT SO THAT LAND DISTURBANCE IS CONFINED TO AREAS OF WORKABLE SIZE.

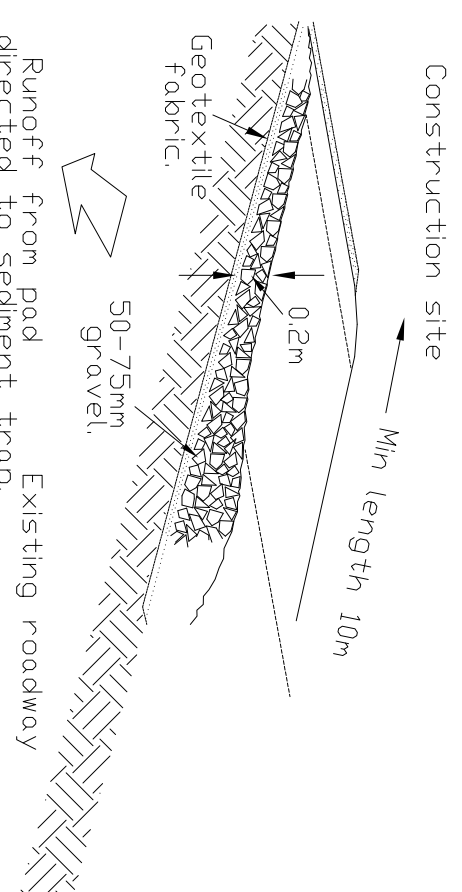
EROSION CONTROL

55. DURING WINDY CONDITIONS, LARGE, UNPROTECTED AREAS WILL BE KEPT MOST (NOT WET) BY SPRINKLING WITH WATER TO KEEP DUST UNDER CONTROL.

E.6. FINAL SITE LANDSCAPING WILL BE UNDERTAKEN AS SOON AS POSSIBLE AND WITHIN 20 WORKING DAYS FROM COMPLETION OF CONSTRUCTION ACTIVITIES.

FENCING

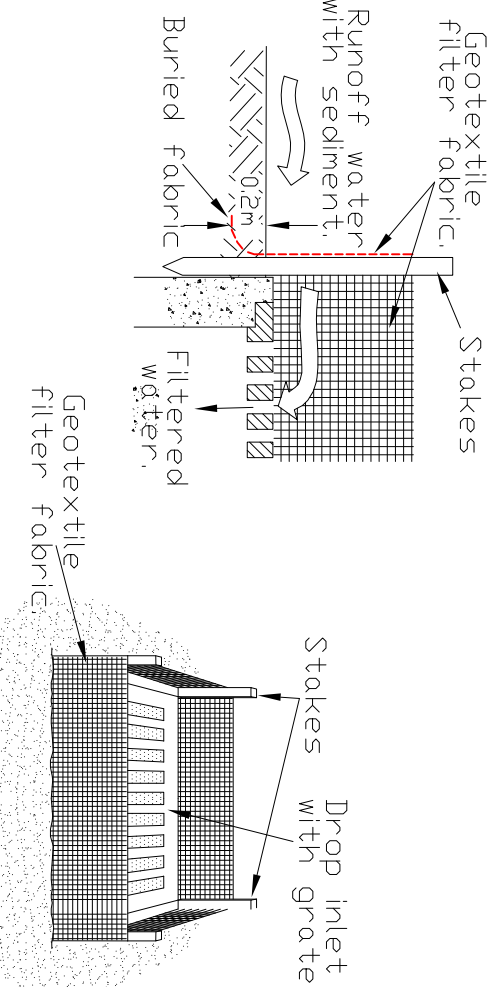
e.7 STOCKPILES WILL NOT BE LOCATED WITHIN 2 METRES OF HAZARD AREAS INCLUDING LIKELY AREAS OF CONCENTRATED OR HIGH VELOCITY FLOWS SUCH AS WATERWAYS, WHERE THEY ARE BETWEEN 2 AND 5 METRES FROM SUCH AREAS. SPECIAL SEDIMENT CONTROL MEASURES SHOULD BE TAKEN TO MINIMISE POSSIBLE POLLUTION TO DOWNSLOPE WATERS, E.G. THROUGH INSTALLATION OF SEDIMENT FENCING.



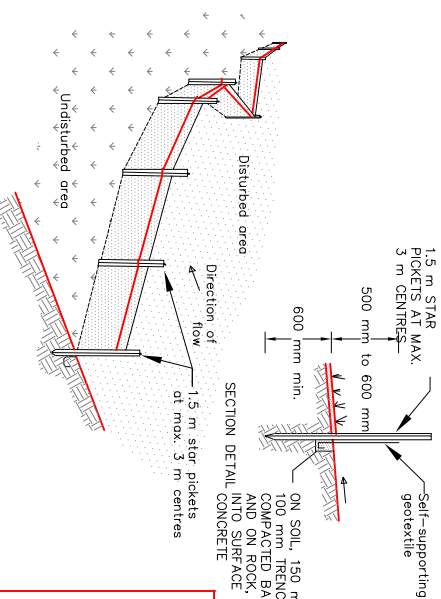
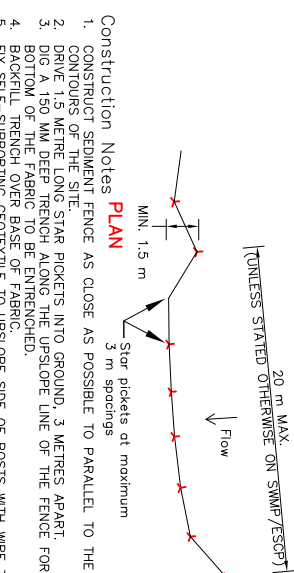
TEMPORARY CONSTRUCTION EXIT

MAINTENANCE:

THE ENTRANCE SHALL BE MAINTAINED IN A CONDITION WHICH PREVENTS TRACKING OR FLOWING OF SEDIMENT INTO PUBLIC RIGHTS OF WAY. THIS MAY REQUIRE PERIODIC TOP DRESSING WITH ADDITIONAL GRAVEL AS CONDITIONS DEMAND AND REPAIR AND / OR CLEANDUP OF ANY MEASURES USED TO TRAP SEDIMENT. ALL SEDIMENT SPILLED, DROPPED, WASHED OR TRACKED INTO PUBLIC RIGHTS OF WAY MUST BE REMOVED.

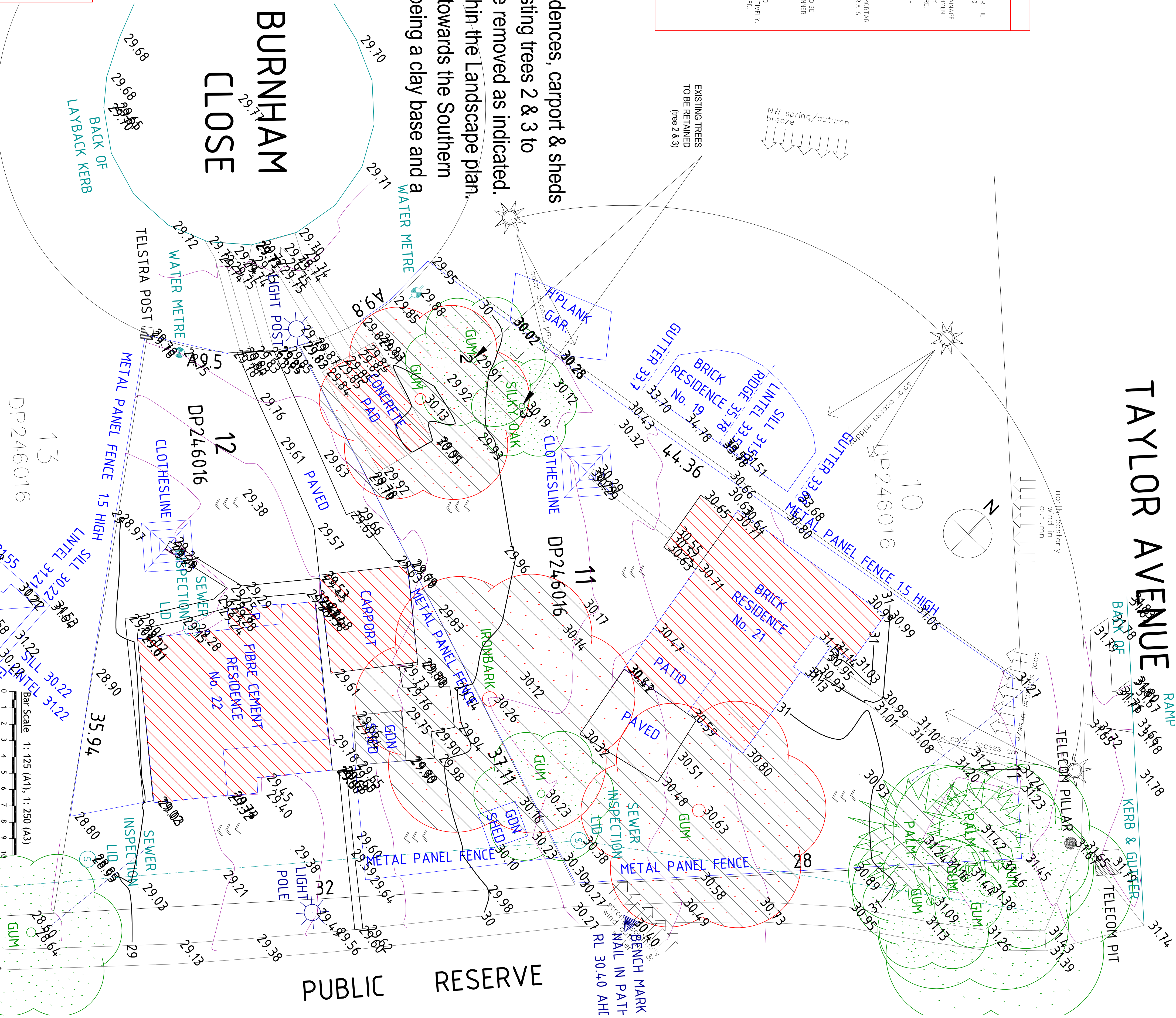


Geotextile Filter Fabric Drop
Inlet Sediment Trap.



NOTES

The lot has existing residences, carport & sheds to be removed, with existing trees 2 & 3 to remain and 6 trees to be removed as indicated. Compensatory trees within the Landscape plan. The drainage flows are towards the Southern boundary, with the soil being a clay base and a thin loam topsoil.



JK'S GARDEN CREATIONS

P.O. BOX 168 GAN GAN RD
ANNA BAY, NSW, 2316

John A. Kime
Web, 0412582966
email, gartentfora704@gmail.com

Member ALIOM
Diploma in Horticulture / Escape Dsm, Cert. Ag

ASSOCIATION WITH:

TOGETO

LANDSCAPE DESIGN

Mishka Sternbeck
P.O. BOX 203 RUTHERFORD NSW 2320
Mob: .0422406688
email: mishkas@optusnet.com.au
Member AILDM
Diploma in Landscape Design

**NEW GENERATION
BOARDING HOUSE
LOT11 & 12 DP 246016
21 & 22 BURNHAM CL.
THORNTON**

ZOE MAY PTY LTD

ARCHITECT



PO Box 138 CESSNOCK NSW 2325
info@sheerdesigns.com.au
P 02 4991 1855 F 02 4991 1850

DRAWN
Mishka
DATE
03/03/2021

SCALES 1:125 @ A1
1:250 @ A3

SHEET
1 OF 4

Site Analysis Plan

DRAWING TO BE READ IN CONJUNCTION WITH THE
ARCHITECTS-- STORMWATER-- ENGINEERS PLANS
PLUS ASSOCIATED SHEETS ATTACHED

LEGEND

- The diagram illustrates a sewer main layout with various components and their corresponding symbols. The components are listed on the right side of the diagram, and their symbols are shown on the left side.

PHOTO LOCATION & DIRECTION

 - HYDRANT (Symbol: A circle with a cross inside)
 - SEWER MAIN (Symbol: A line with a cross inside)
 - WATER MAIN (Symbol: A line with a cross inside)
 - OVERHEAD ELECTRICITY (Symbol: A line with a cross inside)
 - TELUSTA LINE (Symbol: A line with a cross inside)
 - FENCE LINE (Symbol: A line with a cross inside)
 - MAJOR CONTOUR LINE (Symbol: A line with a cross inside)
 - MAJOR CONTOUR LINE (Symbol: A line with a cross inside)
 - BOUNDARY LINE (Symbol: A line with a cross inside)
 - TOP & TIE OF BANKS (Symbol: A line with a cross inside)
 - POWER POLE (Symbol: A line with a cross inside)
 - GAS (Symbol: A line with a cross inside)
 - SEWER INSPECTION POINT (Symbol: A line with a cross inside)
 - SEWER MAN HOLE (Symbol: A line with a cross inside)
 - TELUSTA PIT (Symbol: A line with a cross inside)
 - TPIL TELUSTA PILLAR (Symbol: A line with a cross inside)
 - GPIIT GRATED PIT (Symbol: A line with a cross inside)
 - TAP (Symbol: A line with a cross inside)
 - WM WATER METER (Symbol: A line with a cross inside)
 - RV RAIN WATER OUTLET (Symbol: A line with a cross inside)

TREE CODES

TR/HV/D/S = TRUNK/HEIGHT/DIAMETER/SPREAD

WHERE: HH = 16m (HEIGHT)
 DD = 150 (DIAMETER)
 S = 4m (SPREAD) - RADIUS

EXISTING TREE SHRUB TO BE RETAINED

EXISTING TREE TO BE REMOVED

STRUCTURES TO BE REMOVED

OVERFLOW FLOW PATH

PREVAILING WIND



DATE	BY	AMENDMENT
23.11.21	MS	AMENDMENTS AS PER EMAIL & PLANS
24.11.21	MS	RECEIVED 22.11.2021 EMAIL & PLANS
25.11.21	MS	RECEIVED 24.11.2021 EMAIL & PLANS
30.12.21	MS	AMENDMENTS AS PER EMAIL & PLANS
30.12.21	MS	RECEIVED 25.11.2021 EMAIL & PLANS
30.12.21	MS	RECEIVED 08.12.2021

JKS GARDEN CREATIONS
P.O. BOX 168 GAN GAN RD
ANNA BAY, NSW. 2316
John A. Kime
Mob. 0412582966
email.gardentiora704@gmail.com
Member AILDM
Diploma in Horticulture Landscape Design, Cert Ag
IN ASSOCIATION WITH:

toleiro
LANDSCAPE DESIGN
Mishka Sternbeck
P.O. BOX 203 RUTHERFORD NSW 2320
Mob: 0422406688
email: mishkas@optusnet.com.au
Member AILDM
Diploma in Landscape Design

NEW GENERATION BOARDING HOUSE
LOT11 & 12 DP 246016
21 & 22 BURNHAM CL.
THORNTON

CLIENT
ZOE MAY PTY LTD



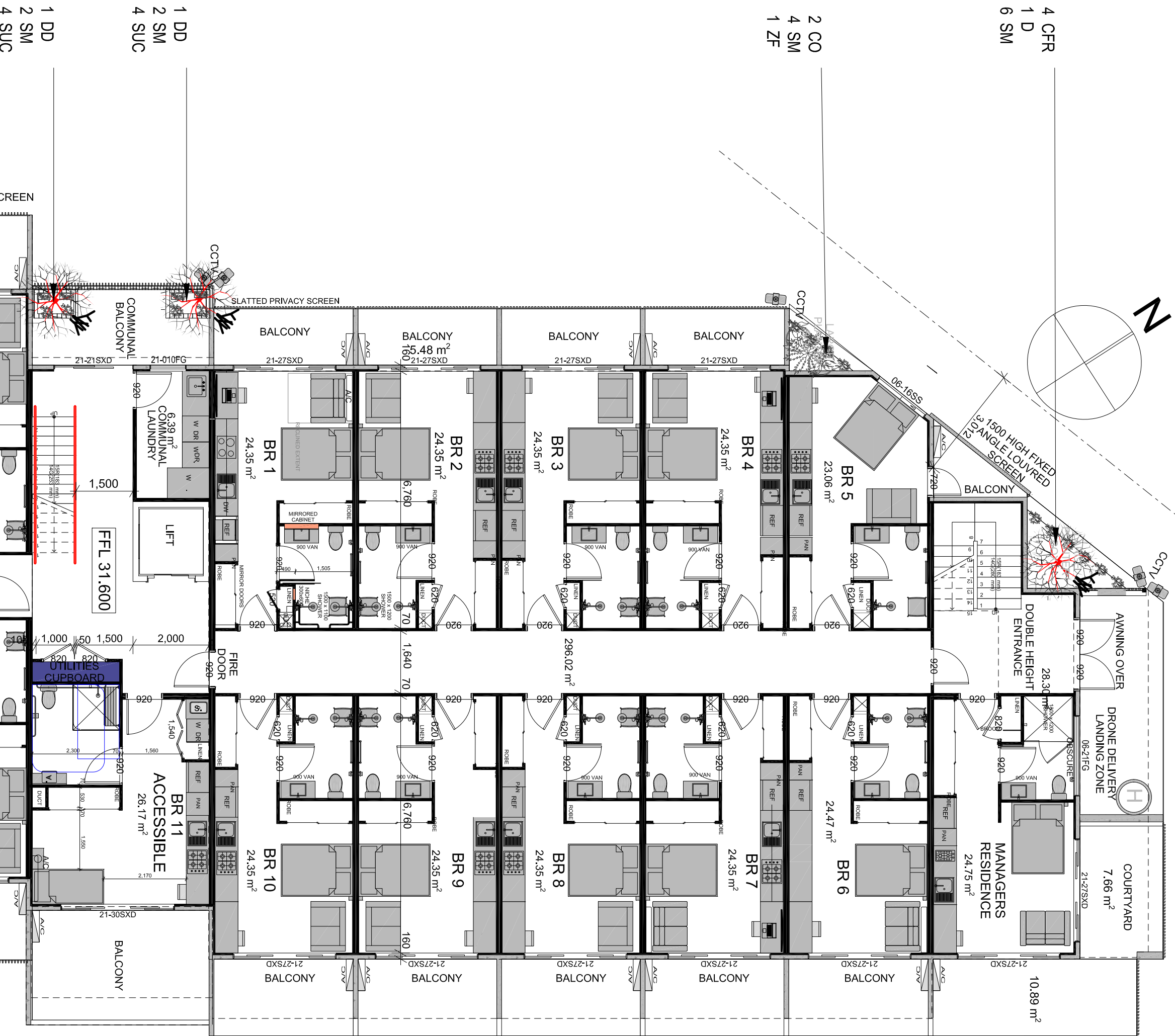
PO Box 138 CESSNOCK NSW 2325
info@sheerdesigns.com.au
P 02 4991 1855 F 02 4991 1850

DRAWN	DATE
Mishka	03/03/2020
SCALES	CHECKED
1:100 @ A1	JK
1:200 @ A3	
SHEET	JOB NO.
3 of 4	
Landscape Plan	
1st & 2nd Floors	

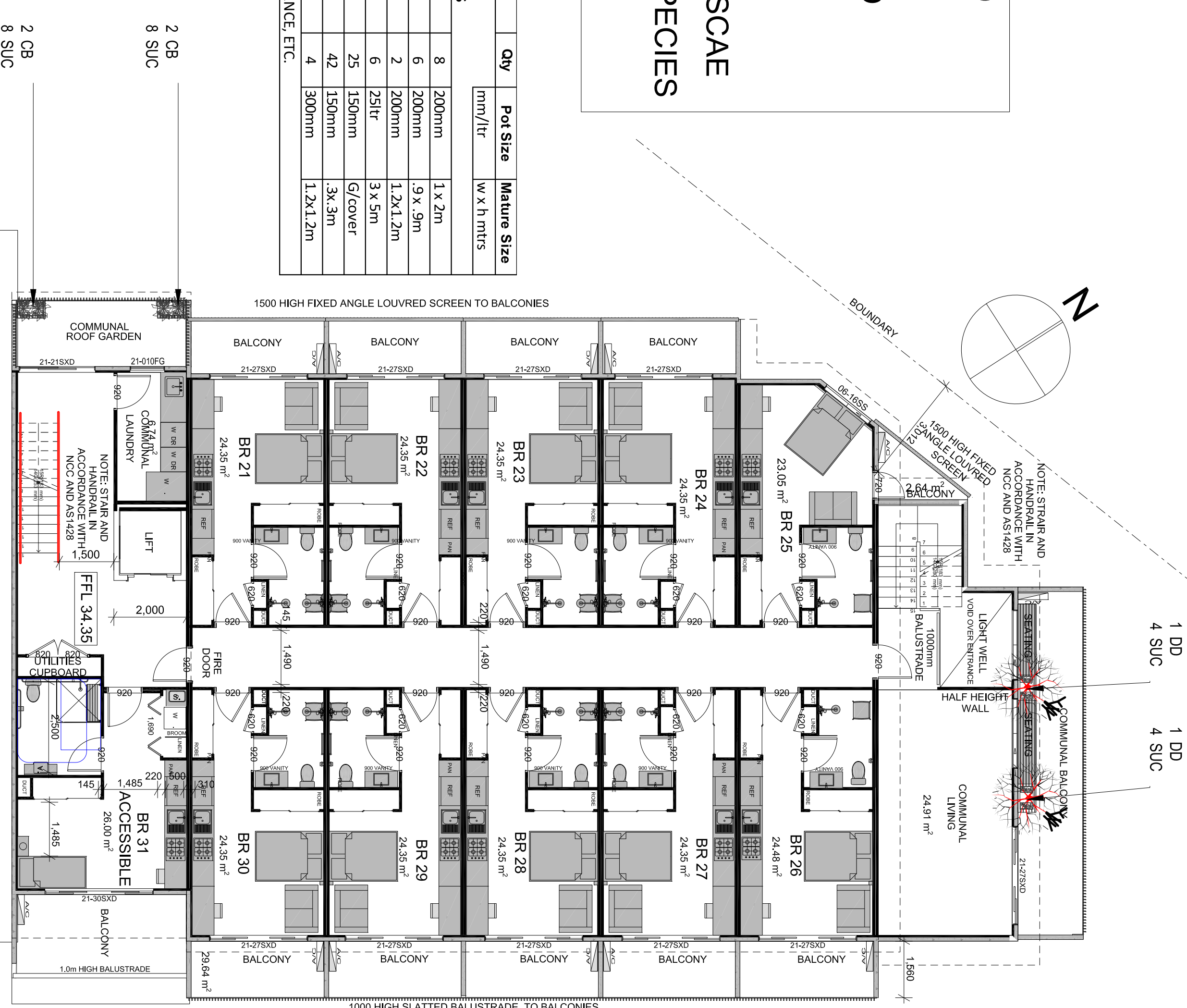
ROOF GARDEN LEGEND
CFR CORDYLINE RUBRA
CB CRASSULA BLUEBIRD
CO CRASSULA OVATA
DD DRACENA DRACO
SM SENECIO MANDRALISCAE
SUC ASS SUCCULENT SPECIES
ZF ZAMIA FURFURACEA

ID	Botanical Name	Common Name	Qty	Pot Size mm/ltr	Mature Size w x h mtrs
PLANT SCHEDULE					
TREES, SHRUBS & GROUNDCOVERS 1st & 2nd FLOOR GARDENS					
CR	Cordylone fruticosa Rubra	Red Palm Lily	8	200mm	1 x 2m
CB	Crassula bluebird		6	200mm	9 x .9m
CO	Crassula ovata		2	200mm	1.2x1.2m
DD	Dracena draco	Dragon blood	6	25ltr	3 x 5m
SM	Senecio mandraliscae	Blue Chalk Sticks	25	150mm	6' cover
SUC	Succulent div		42	150mm	3x.3m
ZF	Zamia furfuracea	Cardboard palm	4	300mm	1.2x1.2m

ALL HEIGHTS ARE AVERAGE DEPENDENT ON SOIL, CLIMATE, MAINTENANCE, ETC.



FIRST FLOOR PLAN



SECOND FLOOR PLAN

